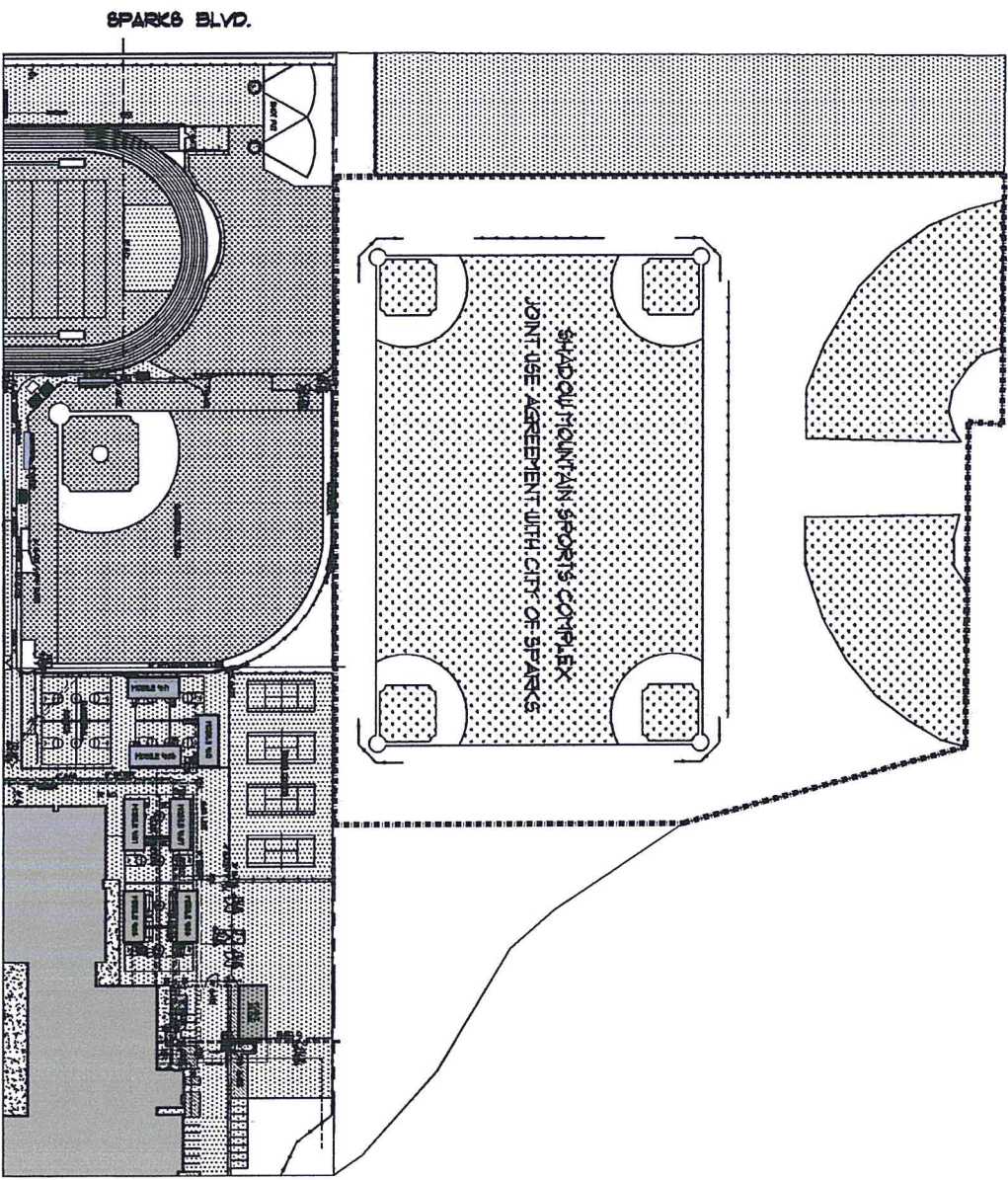


SITE PLAN
 REVISED 4-21-2016



G-1

ARCHITECT
 NAME
 FIRM
 ADDRESS
 PHONE

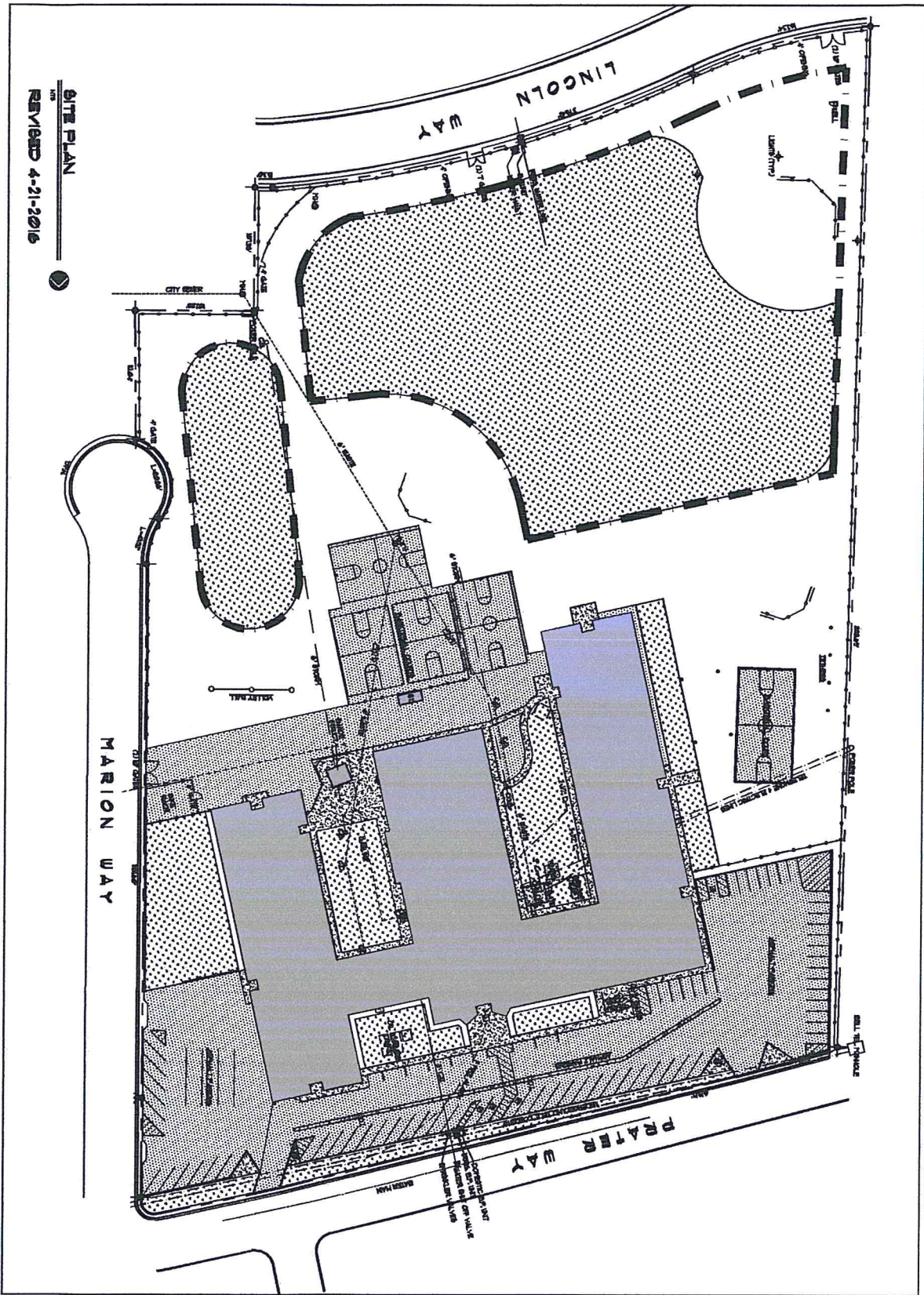
CLIENT
 NAME
 ADDRESS
 PHONE



EDWARD REED HIGH SCHOOL
 1350 BARING BLVD. SPARKS, NEVADA

PLANNING DIVISION - ARCHITECTURE & CONSTRUCTION DEPARTMENT
 705 SOUTH BIRCH STREET - RENO, NEVADA 89509 (775) 333-8811 FAX

PROFESSIONAL SEAL



SITE PLAN
 REVISED 4-21-2016

G-1

ARCHITECT
WYNNE COUNTY
SCHOOL DISTRICT
 1100 N. MAIN
 WYNN, NEVADA
 89403
 PHONE: 702-333-1000
 FAX: 702-333-1001
 WWW: WWW.WYNNCOUNTYNSD.NV.GOV

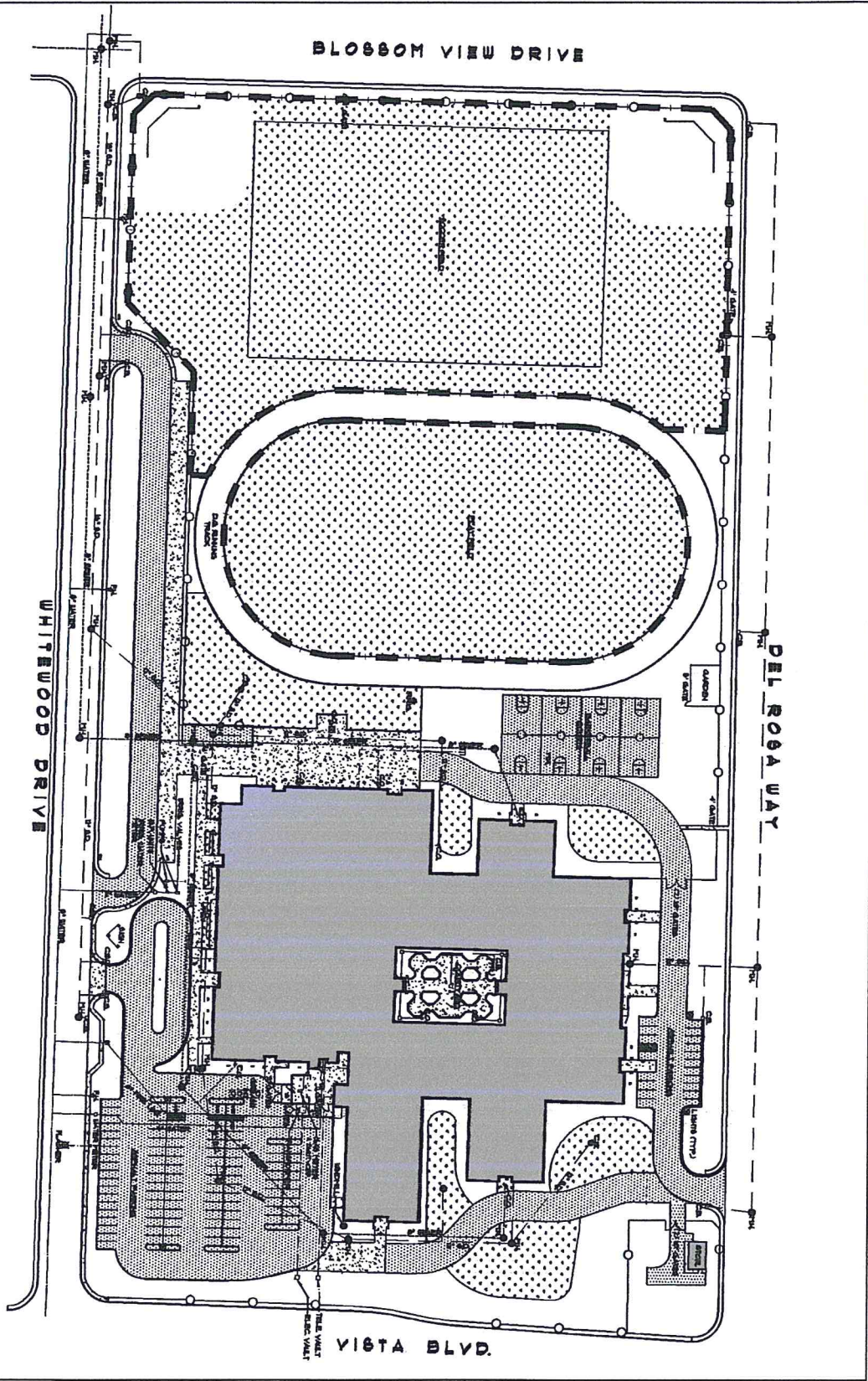


GEORGE DILWORTH MIDDLE SCHOOL
 255 PRATER WAY - SPARKS, NEVADA

PLANNING DIVISION - ARCHITECTURE & CONSTRUCTION DEPARTMENT
 795 SOUTH VIRGINIA STREET, SUITE 200 - SPARKS, NEVADA 89409-7775 - 702-333-6311 FAX

PROFESSIONAL
 SEAL

SITE PLAN
 REVISED 4-21-2016



G-1

DATE: 05/17/16
 BY: S. WILLIAMS
 CHECKED: 05/17/16
 DATE: 05/17/16

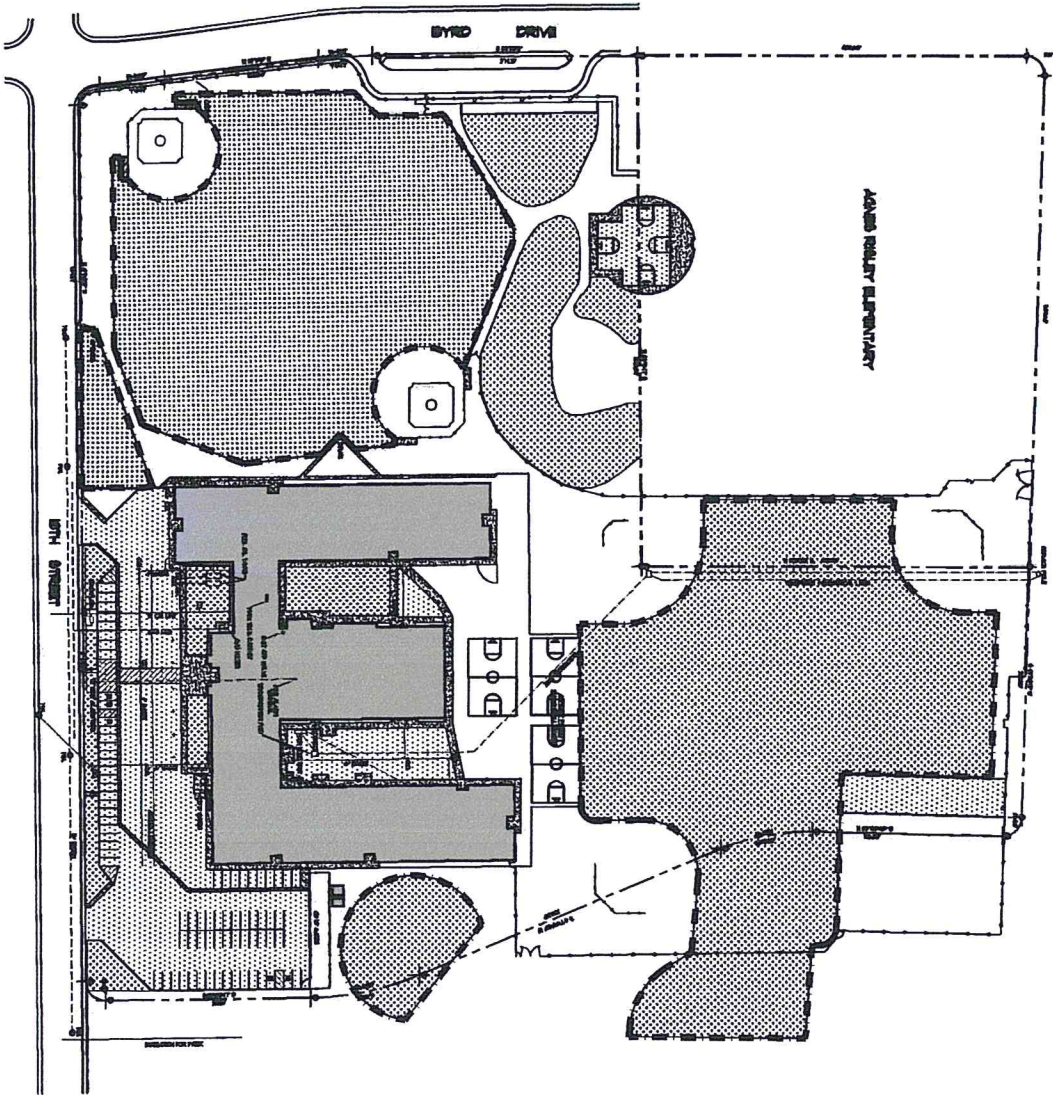


MENDIVE MIDDLE SCHOOL
 1900 WHITWOOD DRIVE, SPARKS, NV 89414

PLANT FACILITIES DIVISION - ARCHITECTURE & CONSTRUCTION DEPARTMENT
 2498 SOUTH WILLOW AVENUE, RENO, NV 89502 (775) 785-5000 FAX

PROFESSIONAL
 SEAL

SITE PLAN
 REVISED 4-21-2016



PROFESSIONAL
 SEAL

SPARKS MIDDLE SCHOOL,
 2275 18TH STREET SPARKS, NVADA



Washoe County
 School District

DATE: 3-4-16

BY: B. WILLIAMS

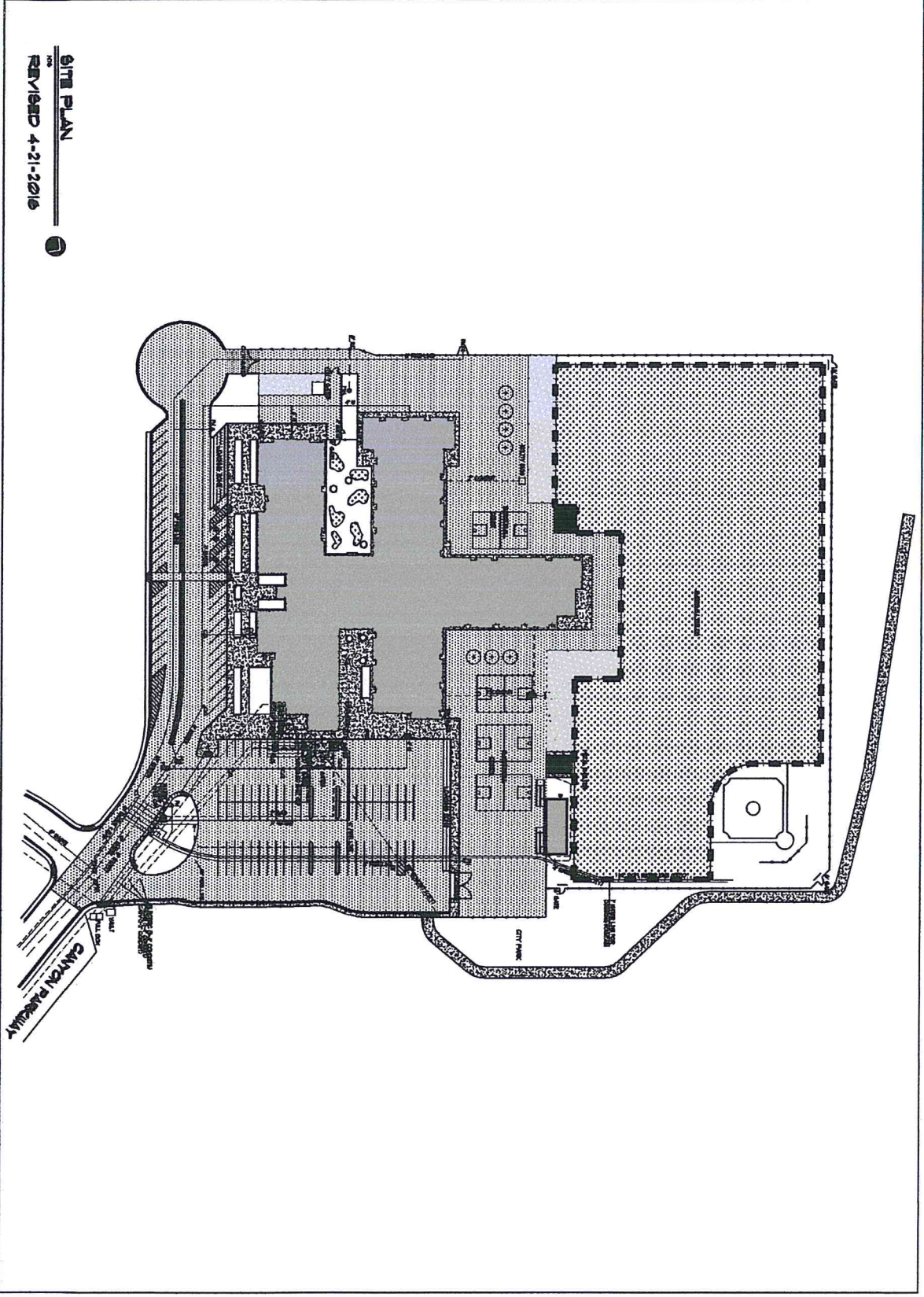
NO: 16-4

16-4

SITE PLAN

C-1

PLANNING AND CONSTRUCTION DEPARTMENT
 225 SOUTH VIRGINIA STREET, SUITE 1100, SPARKS, NV 89401
 (775) 752-3333



SITE PLAN
 REVISED 4-21-2016

G-1

Therese County School District
 2100 CANYON PARKWAY SPARKS, NEVADA
 PROJECT NO. 15-001
 DATE: 4/21/16
 DRAWN BY: J. B. BELL
 CHECKED BY: J. B. BELL
 PROJECT NO. 15-001



BUILD BEASLEY ELEMENTARY SCHOOL
 2100 CANYON PARKWAY SPARKS, NEVADA

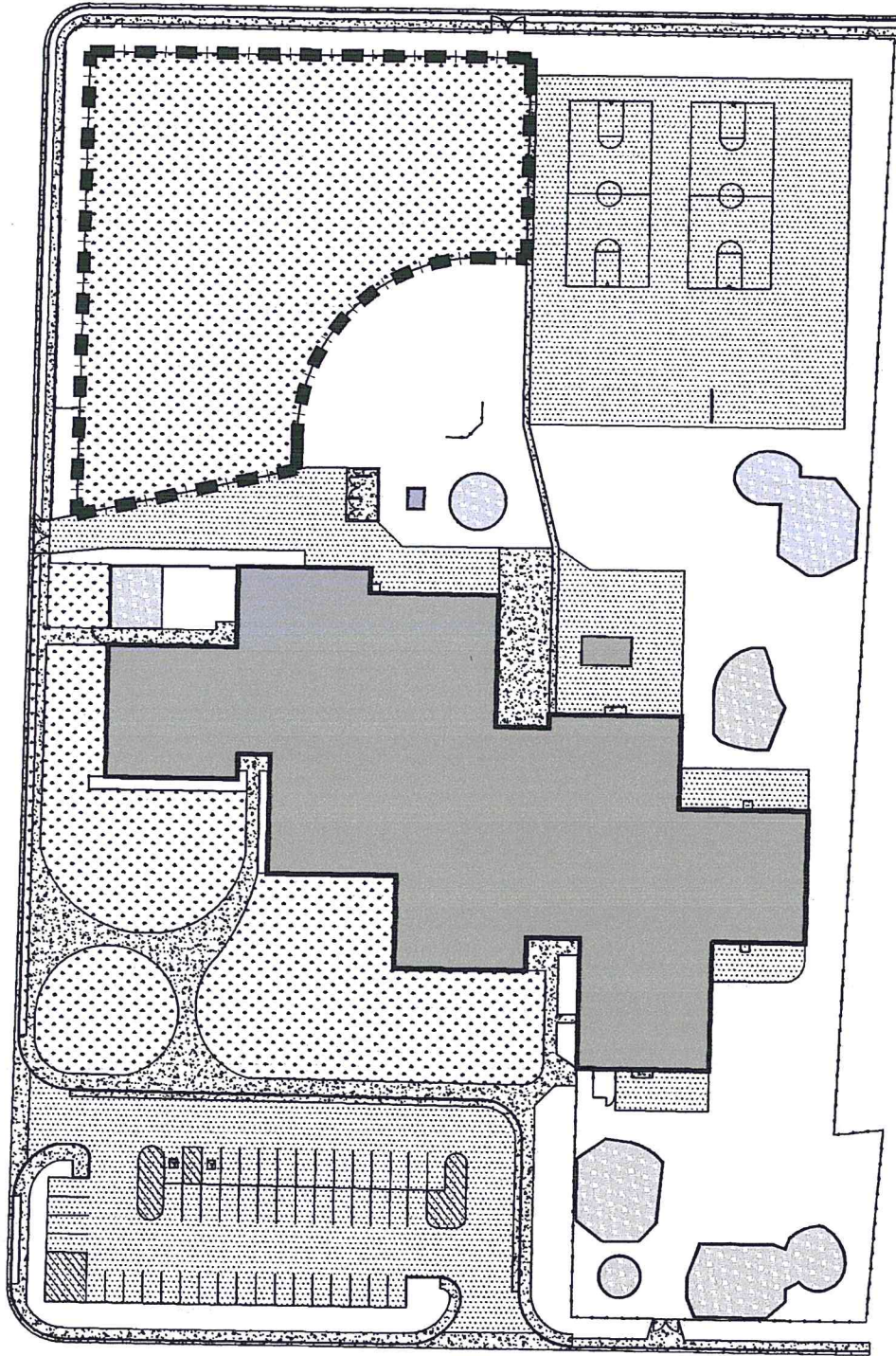
PLANTING AND LANDSCAPE ARCHITECTURE & CONSTRUCTION SERVICES
 745 SOUTH WILSON STREET, RENO, NEVADA 735-3337 / 735-5066 FAX

PROFESSIONAL
 SEAL

WHITEWOOD DRIVE

SITE PLAN
REVISED 4-21-2016

BLOSSOM VIEW DRIVE



DEL ROSA WAY

G-1

SITE PLAN

H-4

NOTED

B. BULLINS

JMM

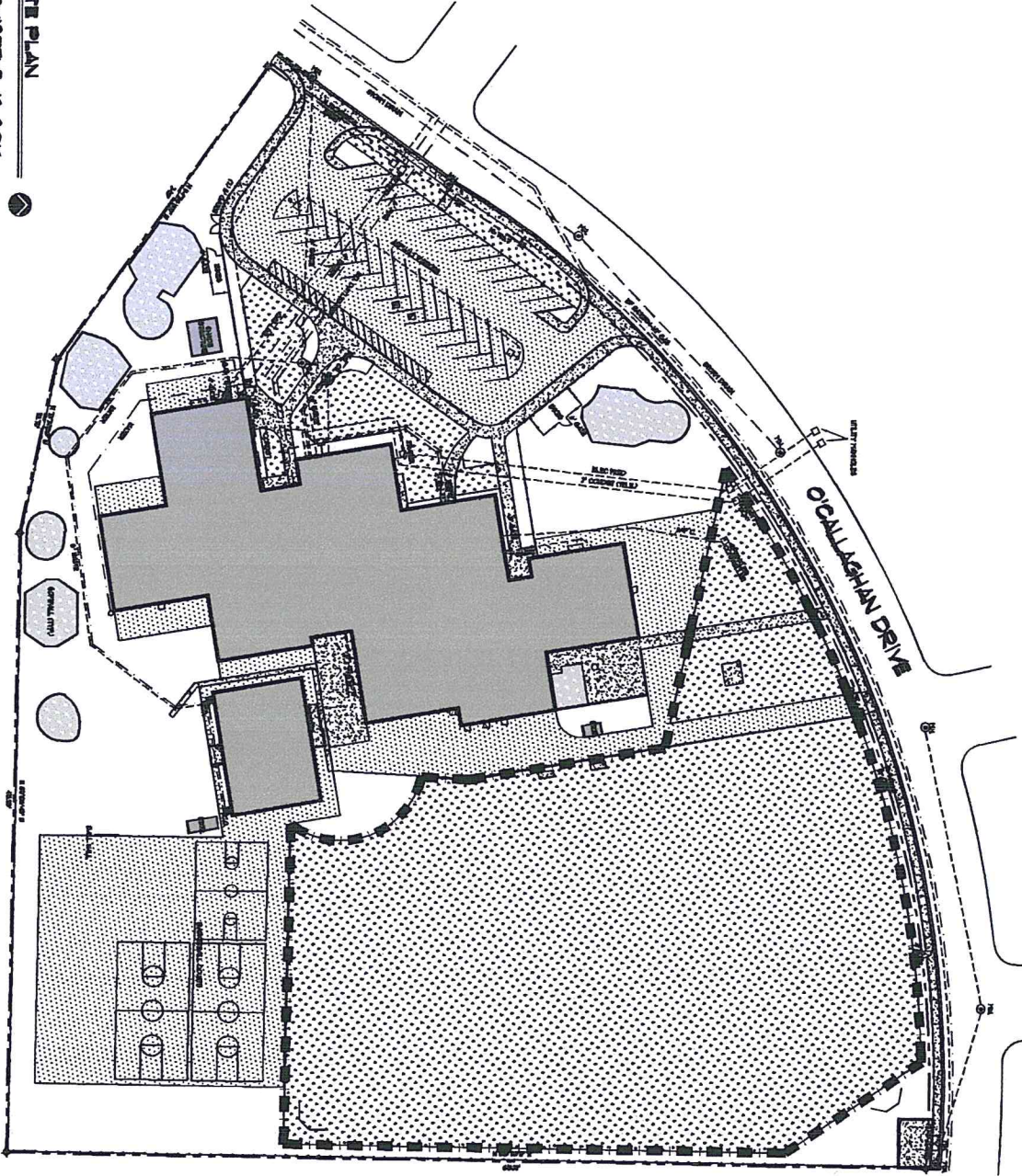
Washoe County
SCHOOL DISTRICT



LLOYD DIEFDRICHSEN ELEMENTARY SCHOOL
1735 DEL ROSA WAY SPARKS, NEVADA

PROFESSIONAL
SCALE

SITE PLAN
 REVISED 8-13-2016



G-1

DATE: 8/13/16

BY: M. WILLIAMS

PROJECT: KATHERINE DUNN ELEMENTARY SCHOOL

NO. 01-4

DATE: 8/13/16

PROJECT: KATHERINE DUNN ELEMENTARY SCHOOL

NO. 01-4

DATE: 8/13/16

PROJECT: KATHERINE DUNN ELEMENTARY SCHOOL

NO. 01-4

DATE: 8/13/16

PROJECT: KATHERINE DUNN ELEMENTARY SCHOOL

NO. 01-4

DATE: 8/13/16

PROJECT: KATHERINE DUNN ELEMENTARY SCHOOL

NO. 01-4

DATE: 8/13/16

PROJECT: KATHERINE DUNN ELEMENTARY SCHOOL

NO. 01-4

DATE: 8/13/16

PROJECT: KATHERINE DUNN ELEMENTARY SCHOOL

NO. 01-4

DATE: 8/13/16

PROJECT: KATHERINE DUNN ELEMENTARY SCHOOL

NO. 01-4

DATE: 8/13/16

PROJECT: KATHERINE DUNN ELEMENTARY SCHOOL

NO. 01-4

DATE: 8/13/16

PROJECT: KATHERINE DUNN ELEMENTARY SCHOOL

NO. 01-4

DATE: 8/13/16

PROJECT: KATHERINE DUNN ELEMENTARY SCHOOL

NO. 01-4

DATE: 8/13/16

PROJECT: KATHERINE DUNN ELEMENTARY SCHOOL

NO. 01-4

DATE: 8/13/16

PROJECT: KATHERINE DUNN ELEMENTARY SCHOOL

NO. 01-4

DATE: 8/13/16

PROJECT: KATHERINE DUNN ELEMENTARY SCHOOL

NO. 01-4

DATE: 8/13/16

PROJECT: KATHERINE DUNN ELEMENTARY SCHOOL

NO. 01-4

DATE: 8/13/16

PROJECT: KATHERINE DUNN ELEMENTARY SCHOOL

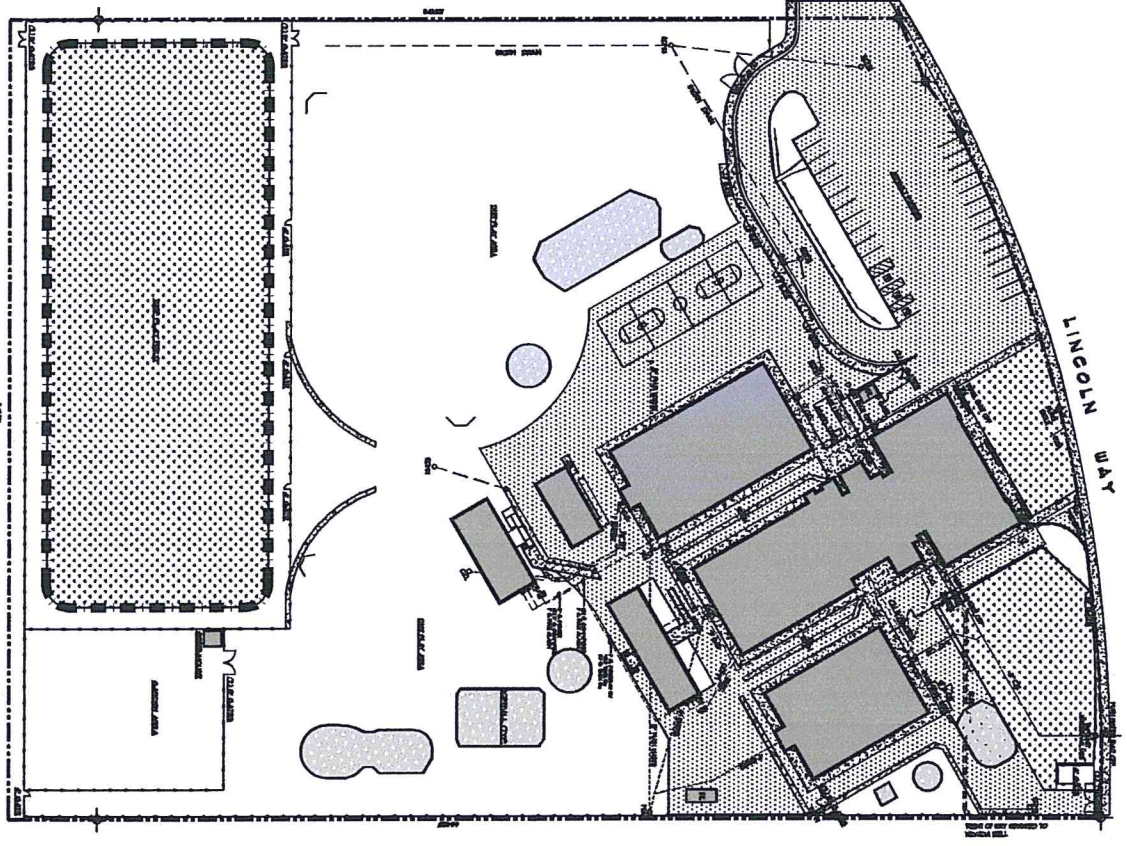


KATHERINE DUNN ELEMENTARY SCHOOL,
 1135 O'CALLAGHAN DRIVE, SPARKS, NEVADA

PLANNING DIVISION - ARCHITECTURE & CONSTRUCTION DEPARTMENT
 700 S. O'NEILL STREET, RENO, NEVADA 89502-7617 | 775-784-5663 FAX

PROFESSIONAL
 SEAL

SITE PLAN
 REVISED 4-21-2016



G-1

SITE PLAN

DATE

BY

FOR

PROJECT

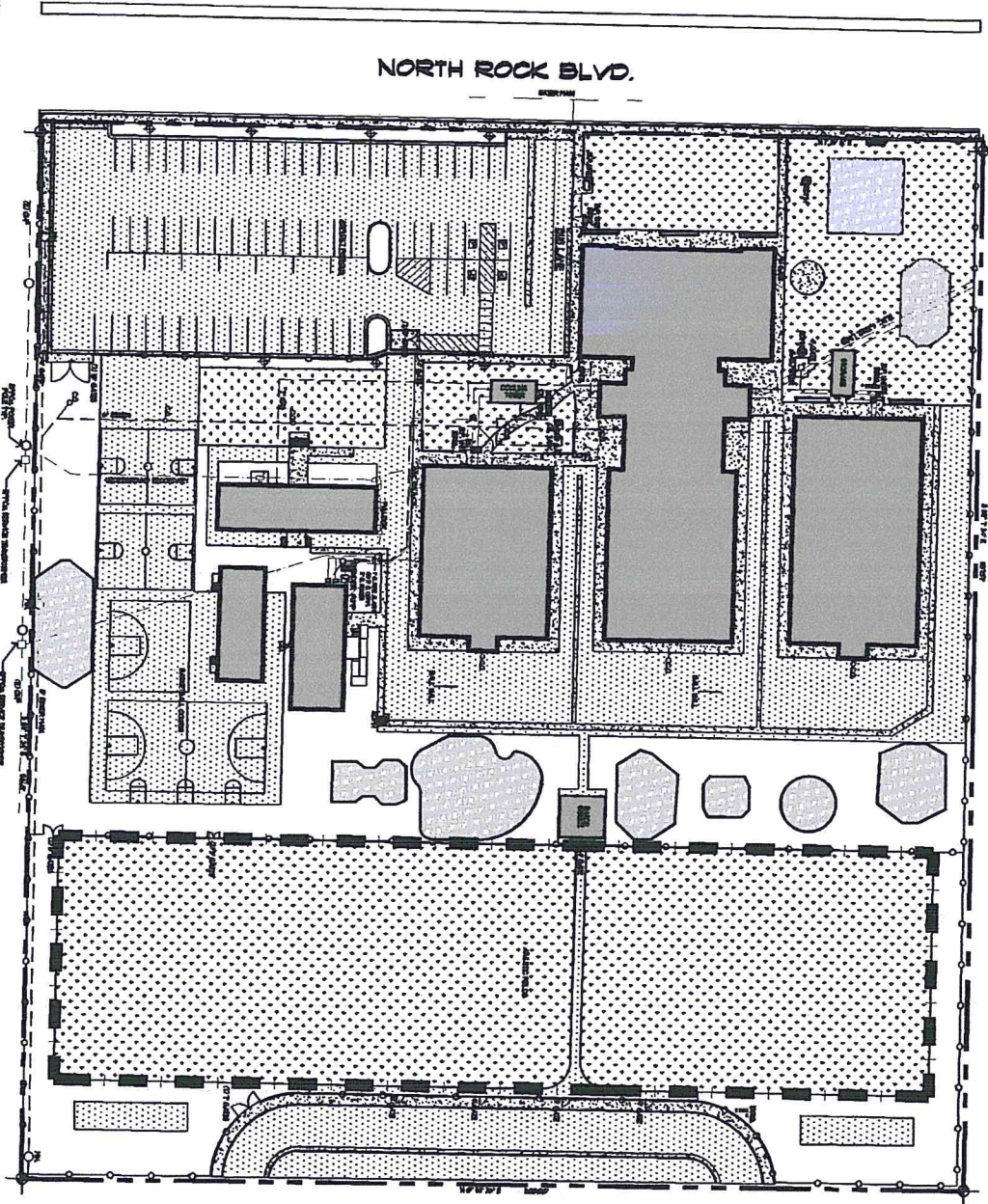


LINCOLN PARK ELEMENTARY SCHOOL
 201 LINCOLN WAY SPARKS, NEVADA

FRANK MATHES DOWNS ARCHITECTURE & CONSTRUCTION DEPARTMENT
 7495 S. HILLYARD AVENUE SUITE 111 LINCOLN, NEVADA (775) 895-5731 (775) 895-5433 FAX

PROFESSIONAL
 S.E.L.

SITE PLAN
 REVISED 4-21-2016



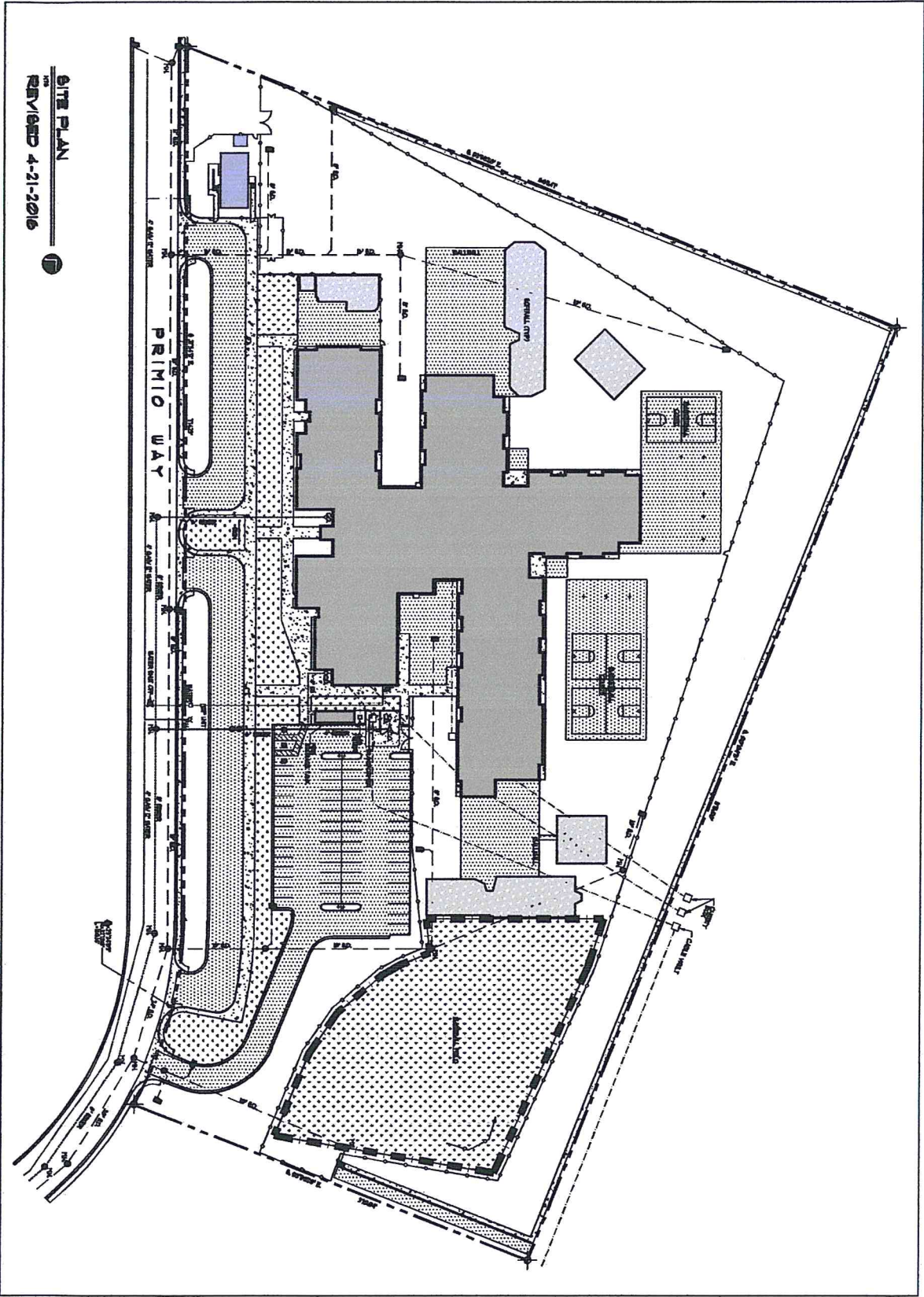
G-1

ALICE MAXWELL ELEMENTARY SCHOOL
 2300 NORTH ROCK BLVD. SPARKS, NEVADA

7895 SOUTH BUREN AVENUE SUITE 111 RENO, NV 89502 (775) 859-6070 (775) 325-5883 FAX



PROFESSIONAL
 SEAL



SITE PLAN
 REVISED 4-21-2016

G-1

DATE _____
BY _____
SCALE _____
PROJECT _____
CLIENT _____

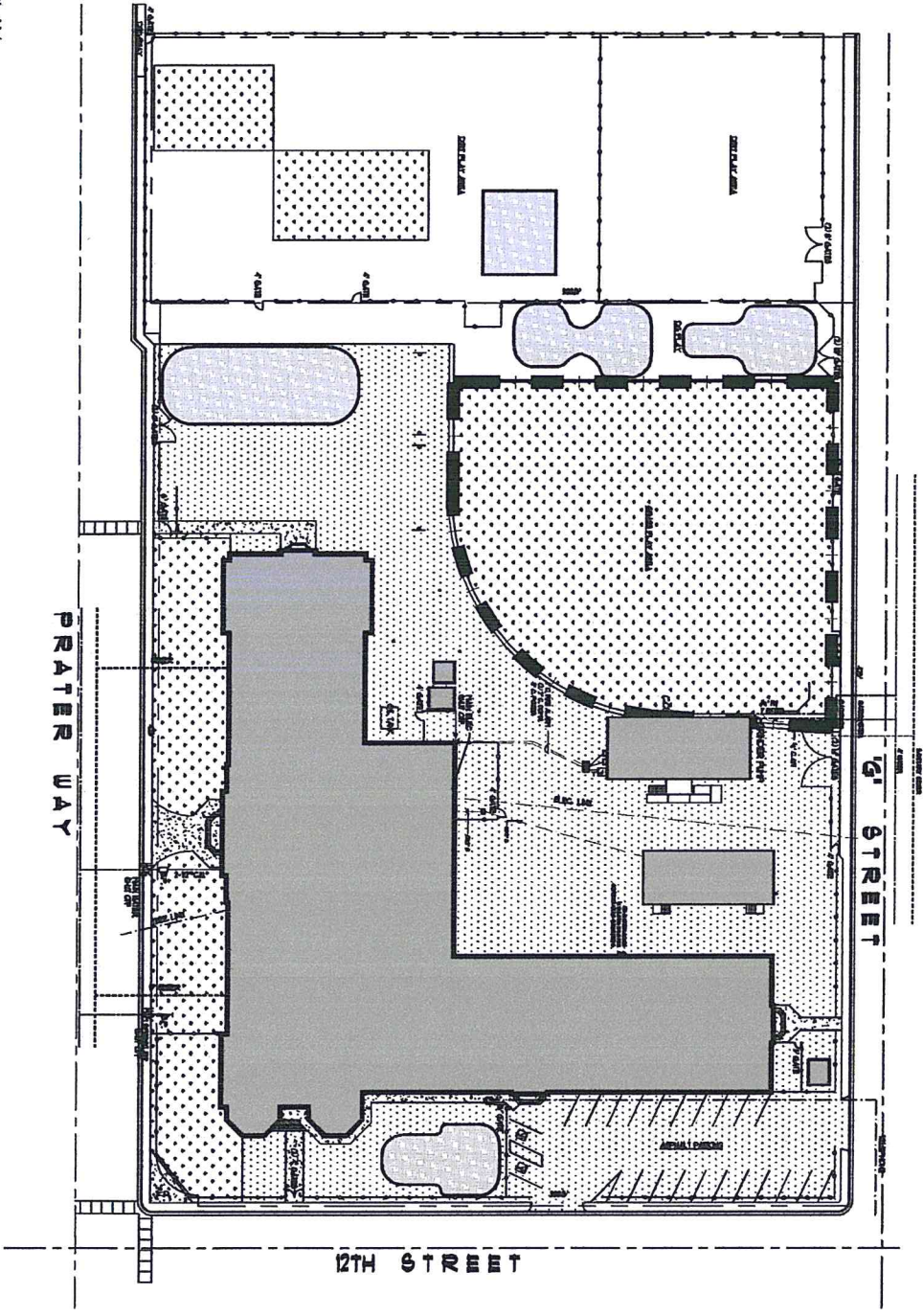


MARVIN MOSS ELEMENTARY SCHOOL
 2200 PRIMIO WAY SPARKS, NEVADA

PLANT FACILITIES DIVISION - ARCHITECTURE & CONSTRUCTION DEPARTMENT
 789 SOUTH HURON STREET - RENO, NEVADA 7300-8900 (730) 25-9680 FAX

PROFESSIONAL
 SEAL

SITE PLAN
 REVISED 4-21-2016



G-1

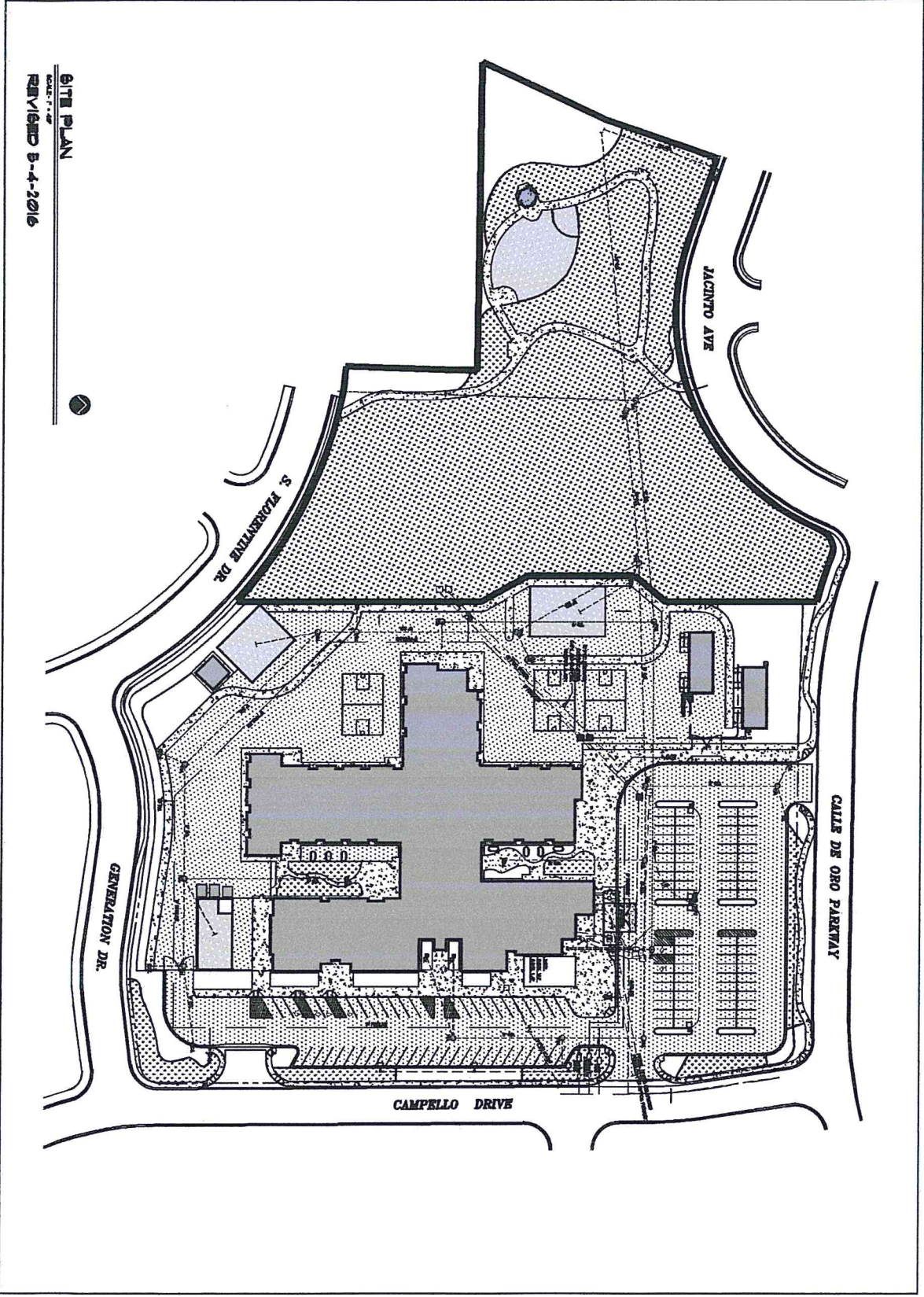
ARTHUR PLAN
 DATE
 DRAWN BY
 CHECKED BY
 APPROVED BY
 PROJECT NO.



ROBERT MITCHELL ELEMENTARY SCHOOL
 1216 PRATER WAY SPARKS, NEVADA

PLANT FACILITIES DIVISION - STRUCTURE & CONSTRUCTION DEPARTMENT
 705 SOUTH VIRGINIA STREET - RENO, NEVADA 89502-7751 (775) 956-5661 FAX

PROFESSIONAL
 SEAL



SITE PLAN
 DATE: 7-1-16
 REVISED: 8-4-2016

G-1

SITE PLAN
 DATE: 7-1-16
 REVISED: 8-4-2016



VAN GORDER ELEMENTARY SCHOOL
 7650 CAMPELLO DRIVE, SPARKS, NEVADA

PLANNING DIVISION - ARCHITECTURE & CONSTRUCTION DEPARTMENT
 705 SOUTH ROCKY MOUNTAIN AVENUE, SPARKS, NEVADA 89411-1200
 TEL: 775-751-2000 FAX: 775-751-2001

PROFESSIONAL
 SEAL